

4.4.4. RESERVED PAGES

The following paragraphs summarise the steps required to access the reserved pages where advanced machine settings can be entered or modified.



Press the "KEY" icon to access the advanced functions. For security reasons, access to advanced functions is password-protected. Enter the valid access code using the numeric keypad.

Contact Simms for Code #

The main advanced features available upon entering the access code are described below:

- **Machine maintenance and setup.**
- **Utility and program management.**
- **GUI diagnostics .**

CONTACT YOUR LOCAL DISTRIBUTOR OR SERVICE CENTRE TO REQUEST THE ACCESS CODES.

MACHINE MAINTENANCE AND SETTING

The machine is supplied already fully adjusted ,but in the event of the replacement of a component or after mechanical maintenance, it may be necessary to create new adjustments or perform new checks.

The menu offers a choice of low-level areas required for the machine adjustment.

Select to perform the following adjustments:

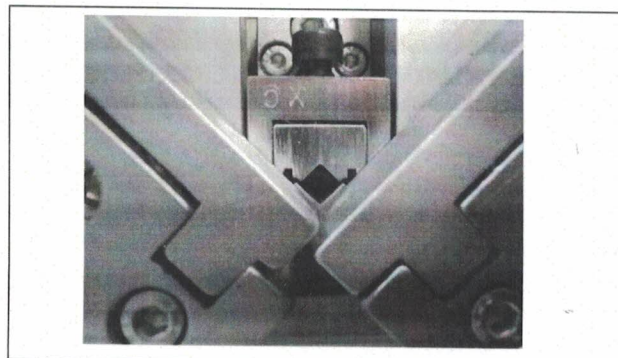
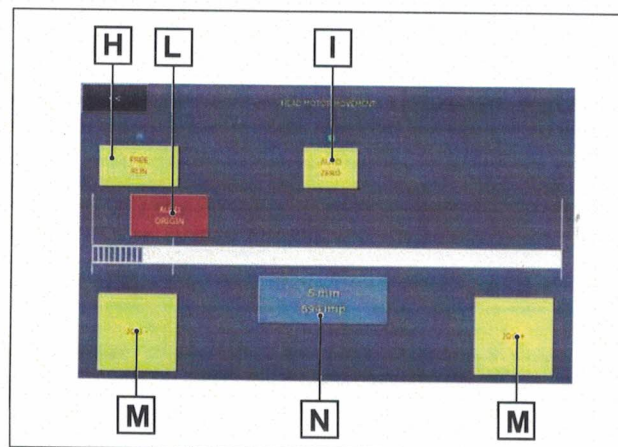
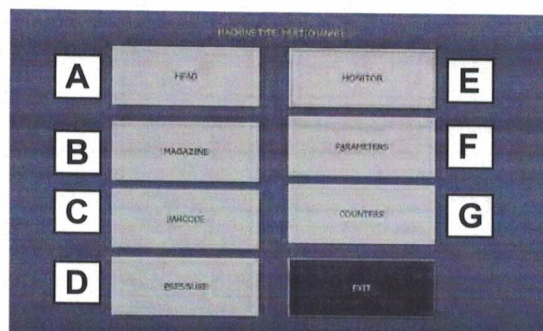
- A. Head adjustment
- B. U600 V-nail magazine adjustment (control not available on the U500 version).
- C. Barcode
- D. Pressure regulation
- E. Diagnostics;
- F. Customizable parameters.
- G. Counters.

U600I head adjustment

- H. Frees motor control so the V-Nail firing unit can be moved by hand.
- I. Controls the motor to run machine zeroing by searching for a mechanical stop as a reference for positions.
- L. Memorises the current head position as a point of origin in relation to the position of the alignment fences.
- M. Direction and movement controls to move the head; the movement is performed by keeping the button pressed.
- N. Displays the position of the head (mm/inch) in relation to the alignment fences; used to move the head to a new position.

Adjustment of head origin in relation to the alignment guide positions (ORIGINS):

- The V-nail firing position in the program refers to the distance between the head and the alignment fences intersection point, called Zero Origin. Zero Origin must be acquired.
- Touch the "ZERO" button to zero the machine's V-nail firing unit.
- Move the head using the JOG+ and JOG- buttons or set the motor to "FREE RUN" to accurately position the head under the alignment fences.
- Refer to the head "V" from which the V-nails are fired so that it is positioned at the intersection of the alignment fences, i.e. at the outer edge of the frame.
- Touch the "ORIGIN" button to memorise the new "ZERO" position to which the V-nail firing positions of all programs will refer.



Simms Machinery, Inc.

PO Box 23

Dallastown, PA 17313

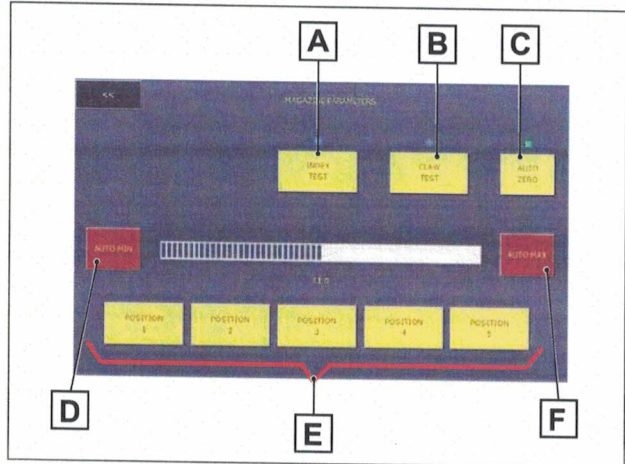
(800) 527-4667

U600 magazine adjustment

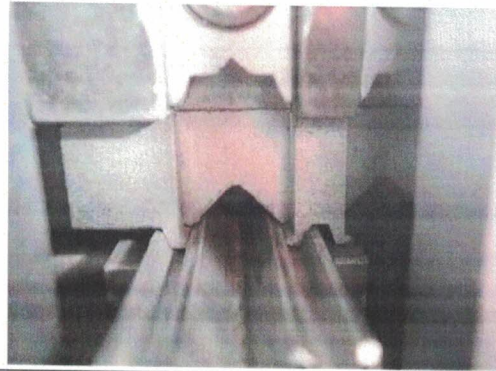
- A. Controls the solenoid valve that activates the magazine release cylinder.
- B. Controls the V-nail pusher cylinder opening/closure solenoid valve.
- C. Controls the motor to run machine zeroing by searching for a mechanical stop as a reference for positions.
- D. Memorises the mechanical position of the first magazine channel, V-nail H5.
- E. Positions;
- F. Memorises the mechanical position of the last magazine channel, V-nail H15.

Mechanical adjustment of the V-nail magazine channel positions.

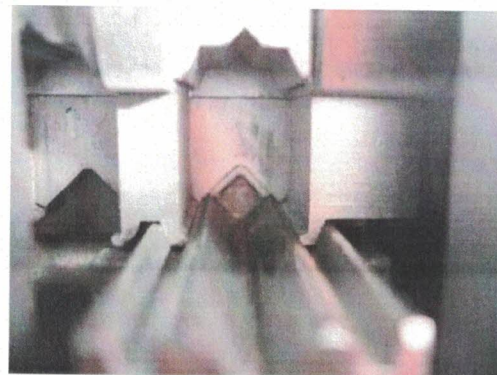
- The position of each magazine channel must perfectly match the conical seats of the L-block support from which V-nails are fired by the hammer, to avoid mechanical jams.
- Only the two outer positions of the magazine need to be acquired; the program will automatically calculate the others.
- Press "ZERO" in order to zero the magazine in relation to the mechanical stop.
- Press the "INDEX" button to release the magazine so that it can be moved manually to the two positions to be acquired.
- Position the magazine in such a way that the H5 V-Nail channel is in front of the L-block support, position #1.
- Block the magazine, using the "INDEX" button, until the channel enters into the L-block support seat. Force it by hand to make sure it engages perfectly.
- Touch the "AUTO MIN" button to memorize position #1 (H5).
- Release the magazine again to move it until the H15 V-Nails channel is in front of the L-type support, Position # 5;
- Block it so the channel enters the L-block support. Make sure it is correctly engaged and then memorise the position using the "AUTO MAX" button.
- Press "Position #" keys to check the correct positioning of all the other magazine channels.



H5



H15



Simms Machinery, Inc.

PO Box 23
Dallastown, PA 17313
(800) 527-4667

Diagnostics

- G. Commands for output forcing (solenoid valves); touch the button to turn the output on/off.
- H. Displays the switch status of the outputs connected to the electronic card (solenoid valves): "red" when the output is active;
- I. Displays the logic status of the input devices connected to the electronic card: red when the input is active.
- L. Displays power supply presence for controlling the "M" and "H" motors and the voltage level.

Machine customization



NOTE - Information on "Machine Customization" can be found in document "APPENDIX A" supplied with this manual.

